

# MORLEY VACATION CARE

## DECEMBER 2019 – JANUARY 2020



Weld Square Primary School  
Dorking PI Morley 6062  
9275 8887



**Morley@bayswaterchildcare.com.au**

**7.30am - 6pm**



### Morley Out of School Care

#### SPECIAL NOTES

**Fees: \$50.00 per child/ per day – before CCS**

**(Excursions are extra, excursions are included in CCS).**

**OPENING HOURS: 7.30am- 6pm**

If your child / children have not attended childcare before, you will need to enrol with Centrelink.

- Prices include bus hire
- Lunch orders will be available on non-excursion days
- Hats are required daily – BUCKET or WIDE BRIM hats.
- A change of clothes & a towel for water activities on hot days.
- Children need a DRINK BOTTLE every day. **If your child does not have a drink bottle on excursion days they will be provided with one at a cost of \$2.00.**
- Please sign your children in and out each day – **If you failure to sign your child/ren in & out, full fees will be charged.**
- Absent days will be charged

**Please complete a paper copy of the FULL enrolment form and return with supporting documents (Immunisation records). You can email them back ()or hand your form into an educator.**

**We are allergy aware.**

We will be open from **Monday 16<sup>th</sup> Dec – Thursday 19<sup>th</sup> Dec** for those schools that start school holidays early. **PROGRAM TO BE CONFIRMED**


<u>MON 16<sup>TH</sup> DEC</u>	<u>TUES 17<sup>TH</sup> DEC</u>	<u>WED 18<sup>TH</sup> DEC</u>	<u>THURS 19<sup>TH</sup> DEC</u>
<u>OPEN</u>	<u>OPEN</u>	<u>OPEN</u>	<u>OPEN</u>

FRI 20<sup>TH</sup> DEC

## Decorate a gingerbread house!

Make stockings, baubles,  
bon bons & pop stick decorations



<u>MON 23<sup>TH</sup> DEC</u>	<u>TUES 24<sup>TH</sup> DEC</u>	<u>WED 25<sup>TH</sup> DEC</u>	<u>THURS 26<sup>TH</sup> DEC</u>	<u>FRI 27<sup>TH</sup> DEC</u>
<b><u>PARTY DAY!</u></b>  <b>Please bring a plate of food to share! Children still need their LUNCH!</b>  <b>Face painting</b>	<b>CHILDREN'S CHOICE!</b>  <b>EARLY CLOSE 12pm</b>  <b>Full fee \$25.00</b>	<u>CLOSED</u>	<u>CLOSED</u>	<u>CLOSED</u>

**CLOSED 12pm TUESDAY 24<sup>th</sup> DEC 2019  
– 5<sup>TH</sup> JAN 2020**

**We reopen Monday 6<sup>th</sup> January 2020**

**CLOSED 12pm 24<sup>th</sup> DEC 2019 – 5<sup>TH</sup> JAN 2020**

**MON 6<sup>TH</sup> JAN**

**Children's  
Choice!**

**What  
should  
we do  
today?**



**TUES 7<sup>TH</sup> JAN**

**Inflatable  
World**



**and a park**  
(to be advised)

**\$18.00**

**10am-4pm**

(Malaga)

**WED 8<sup>TH</sup> JAN**

**MESSY DAY!**



**SLIME**

**MANIA!**



**Please bring  
your bathers &  
a towel!**

**THURS 9<sup>TH</sup> JAN**

**EXCURSION**

**MOVIES!**

**Includes  
popcorn & drink  
and a park**  
(to be advised)

**\$30.00**

**10.30am-3.30pm**  
(Belmont)



**FRI 10<sup>ST</sup> JAN**

**T-shirt art!**

**Bring a white t-  
shirt**



**"Bike &  
SCOOTER  
DAY"**

**Bring your  
bike/ scooter &  
your**

**HELMET!**



**MON 13<sup>TH</sup> JAN**

**Create a  
fairy  
garden!**



**Team water  
games**



**Make ice  
cream slide**



**TUES 14<sup>TH</sup> JAN**

**EXCURSION**



**\$15.00**

**10am – 3pm**  
(Wangara)

**PLEASE  
BRING A  
DRINK  
BOTTLE**

**WED 15<sup>TH</sup> JAN**

**ACTIVITY  
DAY!  
GAINT  
INFLATABLE  
WATER  
SLIDE**



**\$15.00**

**THURS 16<sup>TH</sup> JAN**

**Make toffee**



**Hamma  
beads!**



**Group  
diamond  
craft**



**FRI 17<sup>ST</sup> JAN**

**EXCURSION**

**Bowling**

(Morley)



**Includes lunch:  
Hot dog, chips &  
drink**



**&**

**Cardboard hill  
Park**

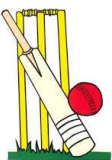
**\$16.00**

**10am – 2pm**



**MON 20<sup>ST</sup> JAN**

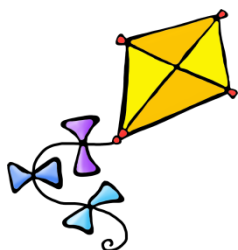
## **CRICKET**



**Iceberg fossils**



**MAKE A KITE!**



**TUES 21<sup>ST</sup> JAN**

## **LATITUDE**

(Edgewater)



**\$30.00**

10.30am – 4.30pm



**WED 22<sup>ND</sup> JAN**

## **Water play**



## **COOKING**



**SCIENCE,  
SCIENCE, AND  
MORE  
SCIENCE!**



**THURS 23<sup>RD</sup> JAN**

## **Botanical**

### **Golf**

(Wanneroo)



**\$16.00**

10am – 3pm



**FRI 24<sup>TH</sup> JAN**

## **Australia Day Celebrations**



**Sausage sizzle  
for lunch**



**Aussie craft**



**DRESS UP IN  
YOUR AUSSIE  
GEAR**

**MON 27<sup>TH</sup> JAN**

**CLOSED  
PUBLIC  
HOLIDAY**

-

**Australia  
Day**



**TUES 28<sup>TH</sup> JAN**

**Back to  
school  
activities!**

**Design your own:  
pencil case**



**key tag**



**& library**

**bag**



**WED 29<sup>TH</sup> JAN**

**KELLY POOL  
COMP!**



**DVD MOVIE  
DAY**



**Soap craft**



**THURS 30<sup>TH</sup> JAN**

## **PARTY DAY!**

**Please bring a  
plate of food  
to share!**

**Children still  
need LUNCH!**

**Jumping  
Castle**



**\$10.00**

**FRI 31<sup>ST</sup> JAN**

**EXCURSION**



**& THE MAZE  
(Bullsbrook)**



**Bring packed  
lunch, water  
bottle, bathers,  
towel & a rashie.**

10am-5pm

**\$30.00**

**PLACES LIMITED**